

No.	Name	Material
1	Anchor shank	Zinc plated steel
2	Expansion element	Zinc plated steel annealed

Building materials



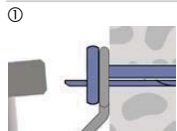
Approvals



Qualities

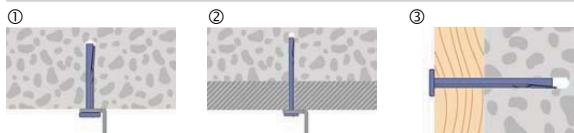


Characteristics



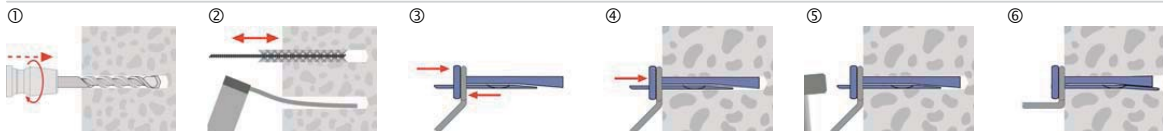
- Easy assembly by driving in the expansion element with a hammer.
- Approved for light weight suspended ceilings according to DIN 18168 or static comparable anchorages up to 1 kN/m².
- Non-inflammable anchor (category A according to DIN 4102-01: 19981-05)
- Allowing for the reduced admissible loads the application without evidence of demand to fire resistance period is permitted

Applications



- ① Fastening of punched straps and slot straps for inclinations.
- ② Long MAN for bridging of non-bearing layers.
- ③ Fixing of wooden slats up to 35 mm thickness.
- Application with approval on cracked and uncracked concrete C20/25 - C50/60.
- Application without approval on pressure-resistant building materials such as natural stone, brick or sandstone.

Installation



- ① Take drill hole-Ø and drill hole depth from the table.
- ② Clean the drill hole with a brush, then blow it out with a purging pump.
- ③ Place the Building materials on the Ceiling Anchor.
- ④ Place the Ceiling Anchor with Building materials concisely into the hole.
- ⑤ Drive in the nail with a hammer.
- ⑥ Nail has to be driven in completely.

All information detailed in our data sheets is based on technical approvals, formulas and site and laboratory testing under optimum conditions and include a stated safety factor. As we have no direct or indirect control over where or how our products are applied or installed, we do not accept any liability either directly or indirectly arising from the use of our products, whether or not in accordance with any advice, specification or recommendation given by us and we recommend site testing of all products for suitability.

	Anchor-Ø	mm	6	
N _{Zul}	Approved tension load Concrete uncracked C25 - C55 ¹⁾	kN	0.5	
V _{Zul}	Approved shear load	kN	0.5	
c	Min. distance to the edge	mm	200	
s	Min. distance betw. anchors	mm	100	
h _{min}	Min. thickness of foundation	mm	100	
h _{ef}	Effective anchorage depth	mm	32	
h ₁	Drill hole depth	mm	40	
d ₀	Drill hole-Ø in the Building materials	mm	6	
d _{cut}	Max. drill hole-Ø	mm	6.4	
d _f	Hole-Ø in the attached part	mm	6.5	
l	Anchor length	mm	40	70
d _{nom}	Anchor-Ø	mm	6	
t _{fix}	Assembling length usable	mm	4.5	35



Ceiling Anchor

recommended tension load for demands on fire strain

N _{Zul}	Fire resistance 60 Min.	kN	0.4	
	Fire resistance 90 Min.		0.25	

recommended loads

N _{Emp}	Recommended tension loads concrete uncracked C25 - C55	kN	0.8	
V _{Emp}	Recommended shear loads concrete uncracked C25 - C55	kN	1.1	

1) Without influence of anchor and edge distance / Safety factor 3