

No.	Name	Material
1	Express Nail	Zinc plated spring steel, yellow chromized

**Building materials**

**Qualities**



**Characteristics**

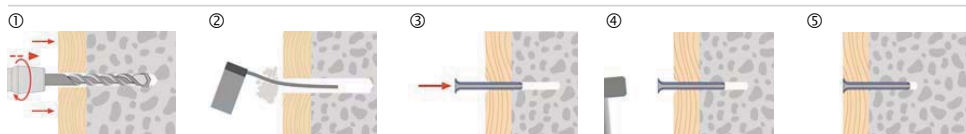
- Economical assembling in concrete and similar building materials.
- No additional plugging or screwing.
- By inserting on to the metal disc (see accessories) the Express Nail-Ø 6 + 8 mm is suitable for overhead assemblies of insulations (fire-proof).

**Applications**



- ① Fastenings of battens under-constructions for interior fittings.
- ② Insulation fixings
- Application in perforated brick are possible with sufficient setting depth.

**Installation**



- ① Take drill hole-Ø and drill hole depth from the table.
- ② Blow out the drill hole with a purging pump (not necessary with perforated brick).
- ③ Insert the Express Nail.
- ④ Drive in the Express Nail with a hammer.
- ⑤ The Express Nail has to be driven in completely.

All information detailed in our data sheets is based on technical approvals, formulas and site and laboratory testing under optimum conditions and include a stated safety factor. As we have no direct or indirect control over where or how our products are applied or installed, we do not accept any liability either directly or indirectly arising from the use of our products, whether or not in accordance with any advice, specification or recommendation given by us and we recommend site testing of all products for suitability.

Size		5	6		8							
Recommended tension load <sup>1)</sup>												
N <sub>Emp</sub>	Concrete C20/25	kN	0.3	0.7	1							
	Brick	kN	-	0.5	0.8							
	Sandstone	kN	-	0.6	0.9							
	Perforated brick	kN	-	2)	2)							
Recommended shear load												
V <sub>Emp</sub>	Concrete C20/25	kN	0.4	1.0	1.4							
	Brick	kN	-	0.8	1.1							
	Sandstone	kN	-	0.9	1.25							
	Perforated brick	kN	-	2)	2)							
h <sub>ef</sub>	Effective anchorage depth	mm	23	27	30	40						
h <sub>1</sub>	Drill hole depth	mm	30	35	40	50						
d <sub>0</sub>	Drill-Ø in the building material	mm	5	6	8							
d <sub>cut</sub>	Max.drill cut-Ø	mm	5.3	6.3	8.3							
d <sub>k</sub>	Ø collar	mm	8.5	11.5	15.5							
l	Length	mm	26	30	60	80	70	90	110	130	150	180
d <sub>nom</sub>	Plug-Ø	mm	5	6	8							
t <sub>fix</sub>	Assembling length usable	mm	3	3	30	50	30	50	70	90	110	140



**Express Nail**

1) Constant tension load only with a min. angle of 10°, with an increasing of the setting depth the values can be enhanced, safety factor 3  
 2) The values have to be determined, dependent of the hole contingent in the stone.

**Metal Disc**

By inserting on the Metal Disc the Express Nail-Ø 6 and 8mm is suitable for overhead assemblies of insulations (fire-proof).



Disc-Ø	mm	38
Hole-Ø	mm	9