

No.	Name	Material	No.	Name	Material
1	Plug	Zinc plated steel	3	Screw with mushroom head (M4-M6)	Zinc plated steel
2	Washer	Zinc plated steel	4	Hexagon screw (M8)	Zinc plated steel

Building material



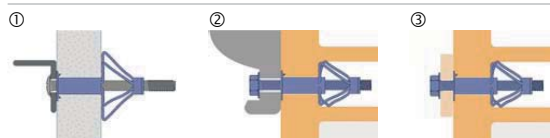
Qualities



Characteristics

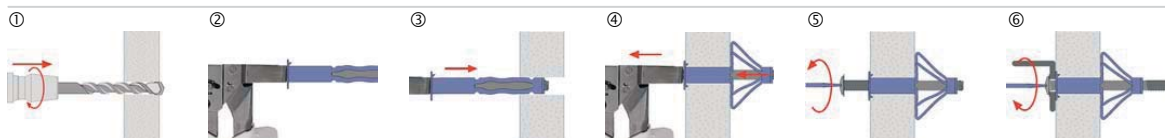
- Pre-assembled Cavity Anchor for fixing in gypsum plasterboards, cement Fiber boards, perforated and concrete brick.
- Controlled, quick and simple installation with the setting tool.
- Anchor fully assembled.
- Collar ensures a tight fit in base material.
- Combined screw setting recess to accept all types of screw bits.
- Used to DIN 18183 standards.

Applications



- Fixing of acoustic ceilings and light building materials.

Installation



- Take drill hole-Ø from the table.
- Place the Cavity Wall Anchor screw head „excluding the washer“ into the setting tool.
- Insert the Cavity Wall Anchor into the base material.
- Expand the Cavity Wall Anchor with the setting tool until it's firmly fixed (do not over tighten!)
- Remove the screw.
- Attach the element with the fixing screw.

All information detailed in our data sheets is based on technical approvals, formulas and site and laboratory testing under optimum conditions and include a stated safety factor. As we have no direct or indirect control over where or how our products are applied or installed, we do not accept any liability either directly or indirectly arising from the use of our products, whether or not in accordance with any advice, specification or recommendation given by us and we recommend site testing of all products for suitability.

Anchor name		4 / 5		4 / 14		4 / 20		4 / 26		4 / 40		5 / 12		5 / 16		5 / 32		5 / 45		6 / 12		6 / 16		6 / 32		6 / 45		8 / 13		8 / 16		8 / 32		8 / 45	
Anchor size		4								5								6								8									
Recommended tension loads: ¹⁾																																			
N _{Emp}	- Gypsum plasterboard d = 12.5 mm	0.15								0.18								0.2								0.2									
	- Wood plate d = 13 mm	0.2								0.25								0.28								0.3									
	- Cement Fiber board d = 12 mm	0.35								0.4								0.42								0.45									
l _s	Screw length	mm	25	40	52	52	65	45	58	71	88	45	58	71	88	45	58	71	88	45	60	70	90												
d ₀	Drill hole-Ø in the building material	mm	8								10								12																
d _f	Hole-Ø in the attached part	mm	5								6								7																
d _s	Anchor-Ø	M	4								5								6																
t _{fix}	Assembling length usable	mm	-12	-16	-23	-16	-16	-20	-24	-24	-26	-16	-24	-26	-26	-20	-25	-25	-30																
l _k	Usable length min.-max.	mm	0-5	5-14	3-20	18-26	32-40	6-12	3-12	14-32	32-45	6-12	3-16	14-32	32-45	6-13	3-16	16-32	32-45																



Cavity Wall Anchor

1) Safety factor 3

Anchor name		4 / 5		4 / 14		4 / 20		4 / 26		4 / 40		5 / 12		5 / 16		5 / 32		5 / 45		6 / 12		6 / 16		6 / 32		6 / 45		8 / 13		8 / 16		8 / 32		8 / 45	
d _k	Anchor collar-Ø	mm	13.5	13.5	13.5	13.5	13.5	16	16	16	16	17.5	17.5	17.5	17.5	17.5	17.5	17.5	17.5	17.5	17.5	17.5	17.5	17.5	17.5	17.5	17.5	17.5	17.5	17.5	17.5	17.5	17.5		
d _{nom}	Anchor for screw-Ø	mm	4								5								6								8								
l _k	Usable length max.	mm	5	14	20	26	40	12	16	32	45	12	16	32	45	13	16	32	45	13	16	32	45												



without screw